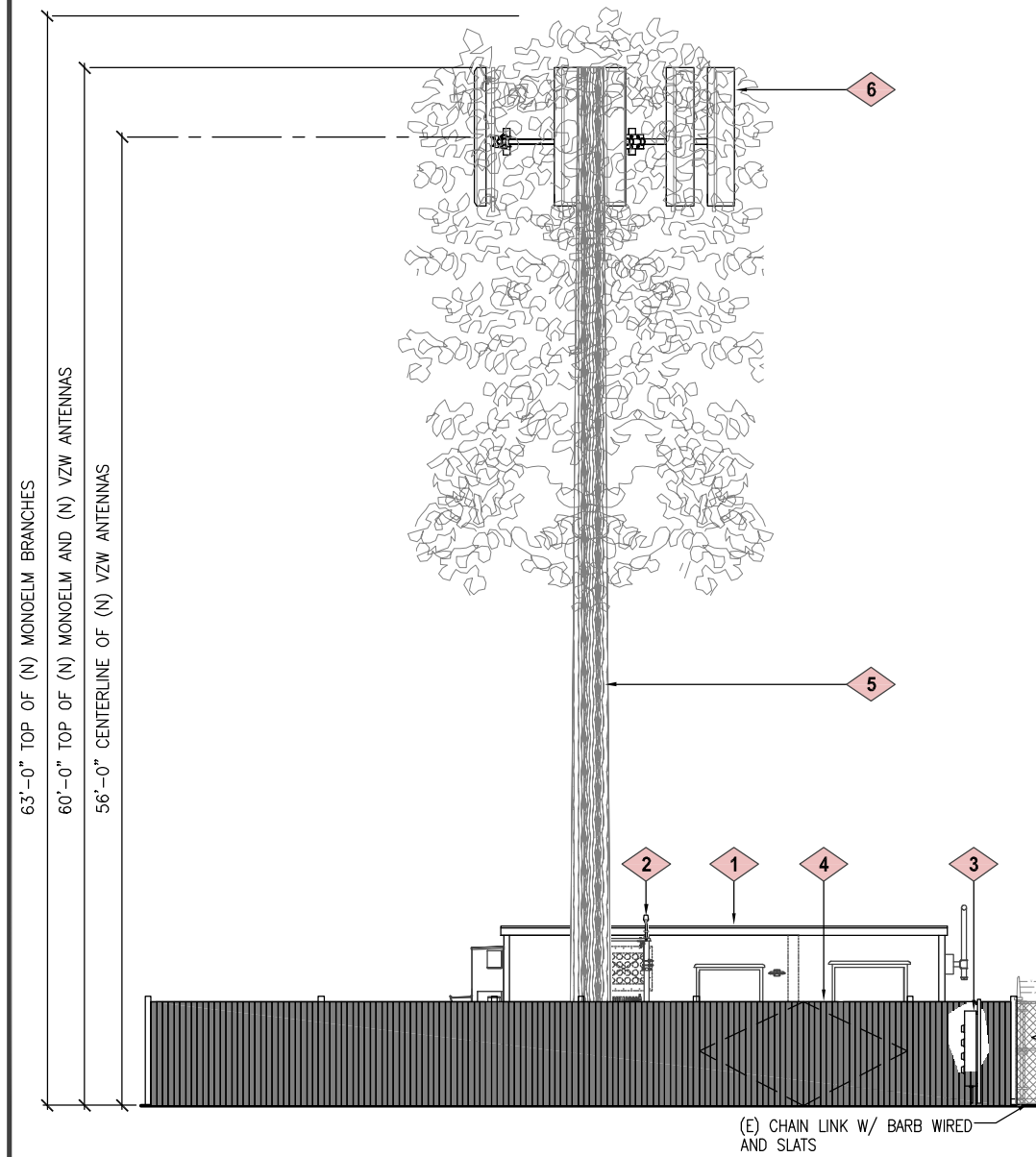


KEYED NOTES

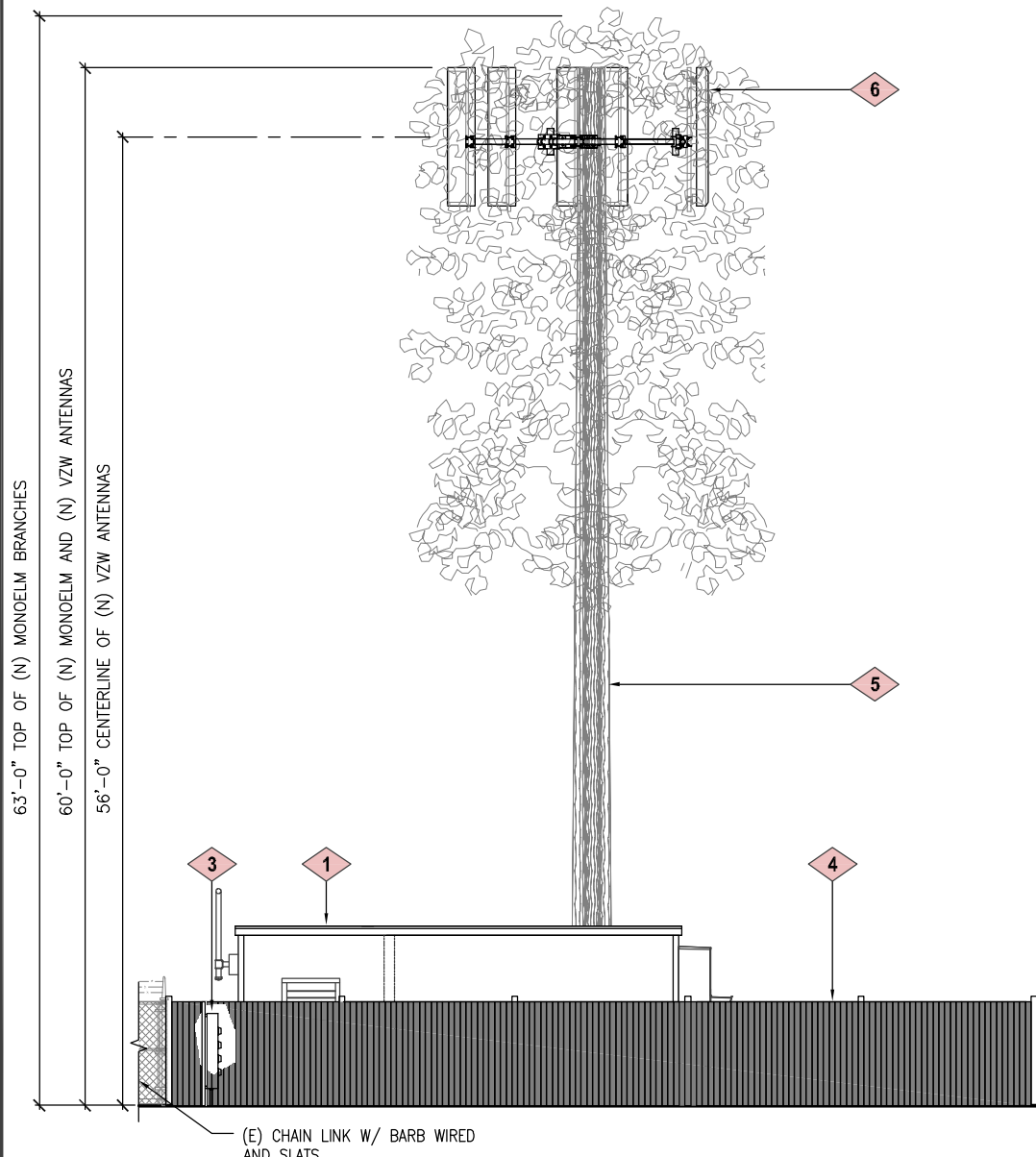
- 1 VZW FIBREBOND 11'-6" X 25'-5.5" PRE-FAB EQUIPMENT SHELTER WITH (2) HVAC UNITS AND (2) LOW PROFILE VENTILATION HOODS AS PROVIDED BY THE SHELTER MANUFACTURER.
- 2 VZW ICE BRIDGE WITH GPS ANTENNA MOUNTED TO SUPPORT LEG.
- 3 VZW UTILITY RACK WITH 4-GANG METER BANK
- 4 VZW 6' TALL WOOD FENCE AND (2) 6' WIDE WOODEN GATES.
- 5 VZW 60' TALL MONOELM WITH CONCRETE FOUNDATION.
- 6 VZW 8' TALL ANTENNAS, (4) PER SECTOR (12 TOTAL) AT A 56' CENTERLINE WITH (12) RRH'S, AND (2) RAYCAP OVP BOXES TO BE MOUNTED TO THE ANTENNA MOUNTS, REFER TO VZW RF CONFIGURATION SHEET.



SOUTH ELEVATION

0 1.5' 3' 5' SCALE: 3/16" = 1'-0" (24x36)
(OR) 3/32" = 1'-0" (11x17)

2



NORTH ELEVATION

0 1.5' 3' 5' SCALE: 3/16" = 1'-0" (24x36)
(OR) 3/32" = 1'-0" (11x17)

1



VERIZON WIRELESS
9656 SOUTH PROSPERITY ROAD
WEST JORDAN, UTAH 84088

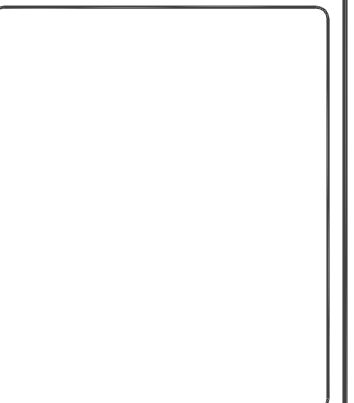
TAEC
Technology Associates Engineering Corporation Inc.
TECHNOLOGY ASSOCIATES

UTAH MARKET OFFICE
5710 SOUTH GREEN STREET
SALT LAKE CITY, UTAH 84123

CORPORATE OFFICE
3115 SOUTH MELROSE DRIVE, SUITE #110
CARLSBAD, CALIFORNIA 92010

DRAWN BY: SEAN T.
CHECKED BY: DOUG K.

| REV | DATE | DESCRIPTION |
|-----|------------|-------------------|
| 6 | 01.26.2015 | REVISED EASEMENTS |
| 4 | 09.03.2014 | REVISED MONOPINE |
| 3 | 05.08.2014 | ZD'S REVISED |
| 2 | 06.18.2013 | REVISIONS PER DK |
| 1 | 06.07.2013 | REVISED TOWER |
| 0 | 04.30.2013 | ZONING DRAWINGS |



BOI - FORT BOISE
NW SEC 11, T3N, R2E
811 RESERVE STREET
BOISE, IDAHO 83702
-- RAWLAND SITE --

SHEET TITLE
SITE ELEVATIONS

SHEET NUMBER
C200